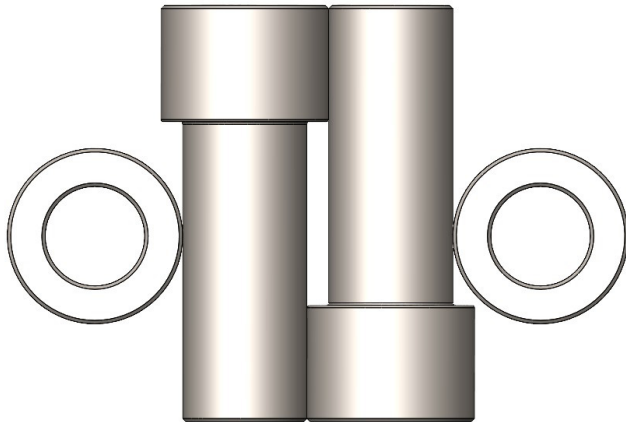




INSTALLATION INSTRUCTIONS

FRONT JEEP GLADIATOR JT MOJAVE COLLAR KIT



ATTENTION!

Statements in these instructions that are preceded by the following words are of special significance:



This symbol means there is the possibility of injury to yourself or others.



This symbol means there is the possibility of damage to the vehicle.

NOTE:

Information of particular importance has been placed in italics.

LIFETIME LIMITED WARRANTY

Progressive Suspension warrants to the original purchaser this part to be free of manufacturing defects in materials and workmanship with a lifetime limited warranty. In the event warranty service is required, you must call Progressive Suspension immediately with a description of the problem.

If it is deemed necessary for Progressive Suspension to make an evaluation to determine whether the part is defective, a return authorization number will be given by Progressive Suspension. The parts must be packaged properly so as to not cause further damage and returned prepaid to Progressive Suspension with a copy of the original invoice of purchase and a detailed letter outlining the nature of the problem. If after the evaluation by Progressive Suspension the part was found to be defective it will be repaired or replaced at no cost to you. If we replace it, we may replace it with a reconditioned one of the same design.

Progressive Suspension shall not be held liable for any consequential or incidental damages resulting from the failure of a Progressive Suspension part. Progressive Suspension shall have no obligation if a part becomes defective as a result of improper installation or abuse.



TECH: 714.523.8700

WWW.PROGRESSIVESUSPENSION.COM

FAX: 714.523.3220

IMPORTANT NOTICE

Caution:

Removing and replacing shock absorbers must be performed by a qualified mechanic according to steps outlined in a factory authorized professional service manual that relates to your particular make, model and year vehicle.

The vehicle must be securely lifted and supported during the removal and installation of the shock absorbers. Failure to do so can cause serious damage and/or injury.

RECOMMENDED TOOLS

- Bench Vise or Arbor Press
- 1" deep socket or equivalent
- Grease
- Soapy water



CHANGING THE CHASSIS AND/OR SUSPENSION ON ANY VEHICLE WILL CHANGE THE HANDLING CHARACTERISTICS OF THAT VEHICLE. CARE SHOULD BE TAKEN WHEN OPERATING THE VEHICLE WITH SUCH MODIFICATIONS WHILE GETTING ACCUSTOMED TO THE NEW HANDLING CHARACTERISTICS.

INSTALLATION

Read all the instructions carefully before installing this kit on your motorcycle. Use your factory authorized service manual as a reference while installing this kit.

1. Apply soapy water to the upper bushing and collar that came with your new Progressive Suspension shocks to aid with collar removal.
2. Place 1" deep socket (or equivalent) over the end of the collar until it contacts the rubber bushing.
3. Place in vise (or arbor press) to press collar out. See Figure 1. Use a smaller socket or equivalent to get collar to exist into the larger socket. See Figure 2.
4. If the rubber bushing pressed out with the collar, apply grease to the bushing. Press back into shock. See Figure 3.
5. Grease the new collars. Use a vise (or arbor press) to begin pressing the long collar into the rubber bushing. See Figure 4.
6. Place the smaller half of the collar into the vise to finish pressing together. See Figure 5.
7. Refer to shock instructions for installation on to vehicle.

FIGURE 1



FIGURE 2

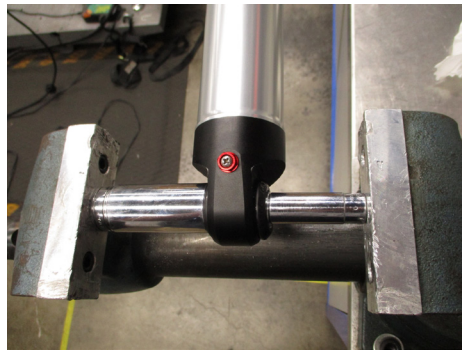


FIGURE 3

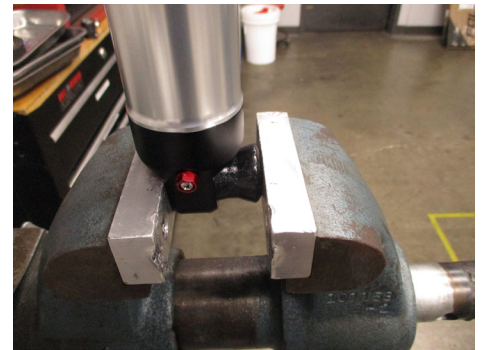


FIGURE 4

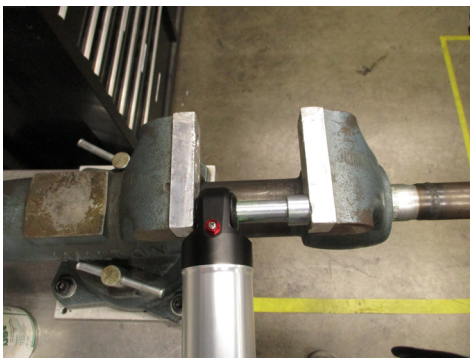


FIGURE 5



TECHNICAL INFO

Our technical staff will assist you if you have any problems or questions. Call (714) 523-8700 from 8am to 4pm PST.

